

Installing Beam Straps

Tools and Supplies You'll Need

To complete your project you will at least need these basic tools:

1. Tape measure
2. Adhesive (for bonding to rubber)
3. Pencil
4. Pins
5. Sharpie™
6. Scissors
7. Screwdriver
8. Straight Edge
9. Utility Knife
10. Black Caulk / Wood Filler

Directions:

This page will show you how to complete the following tasks:

- Install Flexible Straps
- Install Solid Straps
- Install Straight Straps, Plates, Hangers
- Install Classic Straps

To find a matching strap for a certain beam style, go to that beam style page and scroll down. The straps will be right below the beams.

Flexible Beam Strap Installation



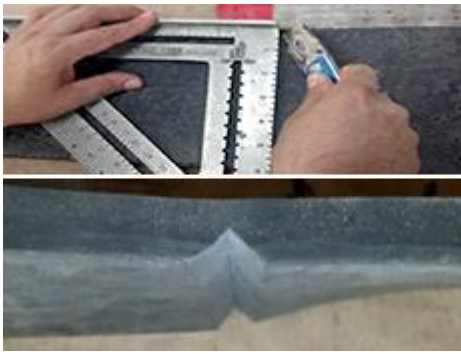
1.) Measure the width of the beam.



2.) Find the center of the strap and mark a center line on the back of the strap.



3.) Draw one line on either side of the center line. The new lines should be half the beam's width + 3/8 inch.



4.) Using a utility knife, cut a wedge or triangular shape that is $\frac{3}{16}$ inch deep (maximum) and $\frac{3}{8}$ inch wide. Be careful not to cut too deep! This will allow the strap to fold around a tight or square corner. For larger radius corners 2-3 parallel smaller cuts are recommended. For very large radius corners, it might not be necessary to cut a wedge at all.



5.) Then apply $\frac{1}{4}$ inch to $\frac{3}{8}$ inch bead of urethane construction adhesive to the back of the strap. Make sure to put adhesive in the wedge to keep it centered. Do not apply adhesive near the edge.



6.) Fit or fold the strap around the beam and make sure the strap is square. Make any necessary cuts if adjustment is needed. Once the strap is in place, draw a line on each side of the strap ends using a pencil.



7.) Place strap on the bottom of the beam. Align strap on the pencil marks and press firmly on strap to adhere the adhesive. Nail strap on bottom corners first. Then nail off one side and then the other. At ground level look closely to see that the strap is flat. It may need a couple more nails to flatten. If the nail heads are showing, use a black "sharpie" and dot the head of the nail.

Installing Solid Straps

Note: Solid straps are specific to the beam. Do not try to mix and match.



1.) Make sure your strap slides over your beam freely.



2.) Put Construction Adhesive on the inside of strap.



3.) Slide strap over the beam in desired location.



4.) Put trim head or finishing screws through the holes of the straps.



5.) You can use black caulking or filler to hide screw heads.

Installing Straight Straps, Plates, and Hangers



1.) DS-412A or B Universal Straight Strap installs much the



2.) Because there is a nut side and a bolt side you generally want to



3.) Then apply 1/4 inch to 3/8 inch bead of PL Premium construction

same way as the solid strap. However, the location of where you can use these is as limitless as your imagination.

mount the complimentary strap on the opposite side of the beam.

adhesive to the back of the strap. Do not apply adhesive near the edge.



4.) Using the screw opening in the straight strap, start a small hole in the beam.



5.) Screw the straight strap into place. A black Sharpie™, black furniture marker, black caulk or filler can be used to cover the screw head.

Classic Strap Installation (S-01 and S-02 straps only)



1.) Measure the width of the beam.



2.) Find the center of the strap and mark a center line on the back of the strap.



3.) Draw one line on either side of the center line. The new lines should be half the beam's width + 3/8 inch.

Depending upon your beam, you might want to lightly score the strap to allow it to bend more easily.



4.) Then apply 1/4 inch to 3/8 inch bead of urethane construction adhesive to the back of the strap. Make sure to put adhesive in the wedge to keep it centered. Do not apply adhesive near the edge.



5.) Fit or fold the strap around the beam and make sure the strap is square. Make any necessary cuts if adjustment is needed. Once the strap is in place, draw a line on each side of the strap ends using a pencil.



6.) Place strap on the bottom of the beam. Align strap on the pencil marks and press firmly on strap to adhere the adhesive. Nail strap on bottom corners first. Then nail off one side and then the other. At ground level look closely to see that the strap is flat. It may need a couple more nails to flatten. If the nail heads are showing, use a black Sharpie™ and dot the head of the nail or use a tiny bit of black caulk or filler to hide the nail head.