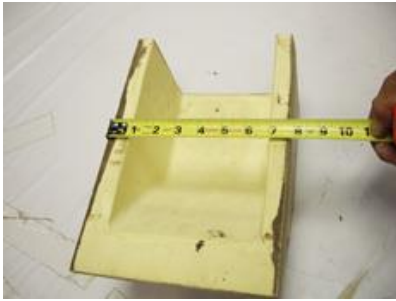


# Installing Corbels

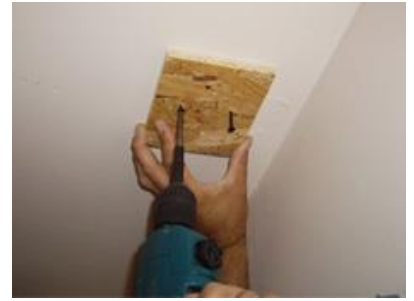
The following is an instruction guide on how to install corbels.



1.) Measure the inside dimensions of the corbel.



2.) Cut a Block of wood (not supplied) to fit the inside dimension of the corbel.



3.) Install the block of wood where you want the corbel to go.



4.) Apply the industrial strength glue or PL premium construction adhesive on the edges of the corbels.



5.) Slide the corbel into place over the block of wood.



6.) Use screws through the corbel into the block of wood on both sides of the corbel.

Countersink the screws slightly.

Screws hold the corbel in place while the glue dries.



7.) Fill in the screw holes with the colored caulk or colored wood filler.

Finished!